



UNIT SKYLIGHT CATALOG

Curb Mount Skylights

Table of Contents

Standard Curb Mount Skylights

1. [**CMDD:** Curb Mount, Double Dome](#)
2. [**CMG:** Curb Mount, Glass](#)
3. [**CM-PC PANEL:** Curb Mount with Multi-Wall Polycarbonate Panel](#)

Standard Curb Mount Skylights with Thermal Break

4. [**CMDD-TB:** Curb Mount, Double Dome, Thermal Break Frame](#)
5. [**CMG-TB:** Curb Mount, Glass, Thermal Break Frame](#)

Curb Mount Skylights with Fall Through Protection

6. [**CMDD-FTP:** Curb Mount, Double Dome, OSHA Compliant Fall Through Protection](#)
7. [**CMDD-TB-FTP:** Curb Mount, Double Dome, Thermal Break OSHA Compliant Fall Through Protection](#)
8. [**CMDD-PRZ-FTP:** Curb Mount, Double Prismatic Polycarbonate Dome, OSHA Compliant Fall Through Protection](#)

Table of Contents (con't)

Curb Mount Skylights with Fall Through Protection (cont'd)

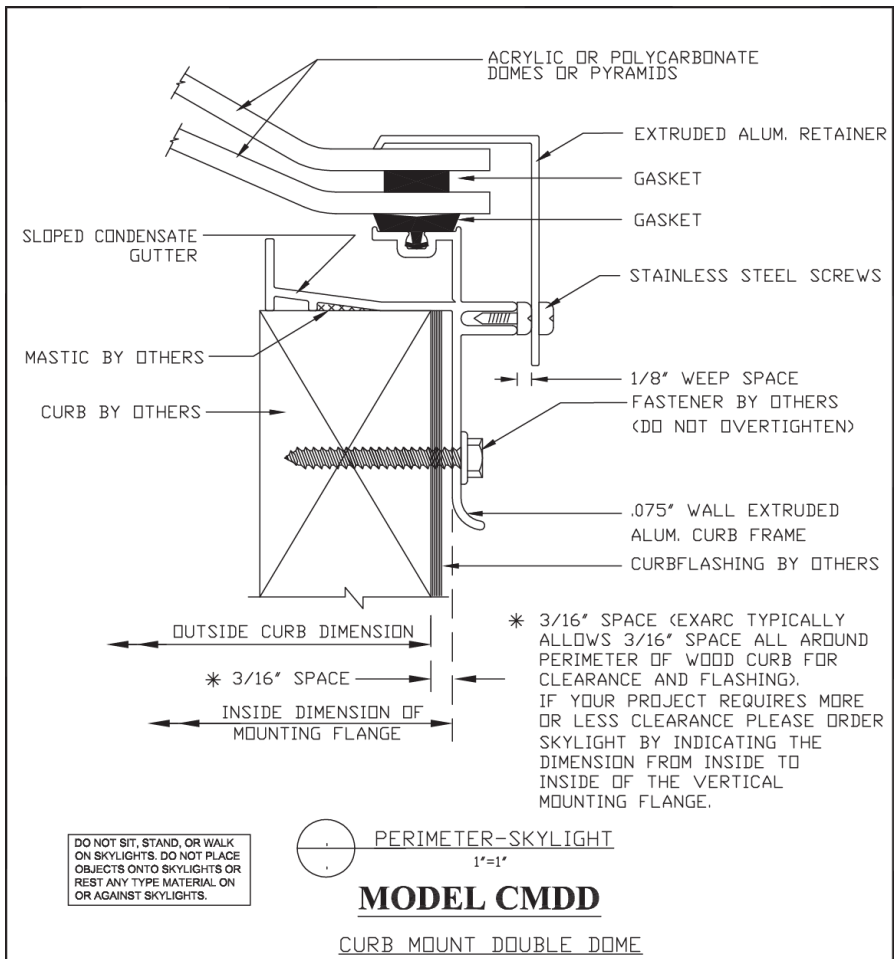
9. **CMDD-TB-PRZ-FTP:** Curb Mount, Thermal Break Frame, Double Prismatic Polycarbonate Dome, OSHA Compliant Fall Through Protection

CF1 Curb Mount Skylights

10. **CMDD-CF1:** Curb Mount, CF1 Curb Frame, Double Dome

11. **CM -PC PANEL-CF1:** Curb Mount, CF1 Curb Frame, Polycarbonate Panel

1. **CMDD:** Curb Mount, Double Dome



SPECIFICATIONS: MODEL CMDD

MODEL: CMDD	EXARC DESIGN, FACTORY ASSEMBLED, ALUMINUM FRAME, CURB MOUNT SKYLIGHT TO MOUNT ONTO SLOPED OR LEVEL FLASHED CURBS BY OTHERS. GLAZING TO BE THERMOFORMED, ACRYLIC OR POLYCARBONATE DOMES OR PYRAMIDS. ALUMINUM FRAME DESIGN WITH MITERED AND WELDED CORNERS TO HAVE SLOPED CONDENSATE GUTTER WITH PROVISION TO DRAIN ALL MOISTURE TO THE EXTERIOR.				
GLAZING:	THERMOFORMED ACRYLIC OR POLYCARBONATE DOME OR PYRAMID (OUTER LITE) THERMOFORMED ACRYLIC OR POLYCARBONATE DOME OR PYRAMID (INNER LITE) COLOR OPTIONS: CLEAR/ CLEAR, CLEAR/ WHITE, BRONZE/ CLEAR				
FINISH:	MILL FINISH (STANDARD), BRONZE PAINT (POWDER COAT) OPTIONAL				
ALUMINUM:	EXTRUDED 6063-T5, GLAZING FRAME .075", GLAZING RETAINER .065"				
FASTENERS:	STAINLESS STEEL AT GLAZING CAPS. ALL FASTENERS NATURAL FINISH.				
GASKET:	EXTRUDED EPDM (BLACK)				
SHIPPING:	FACTORY ASSEMBLED UNITS				
INSTALLATION:	BY OTHERS				
DESIGN:	DESIGN LOADS PER LOCAL CODES OR PER PROJECT SPECIFICATIONS - GLAZING THICKNESS AND THERMOFORMED HEIGHT OF DOMES OR PYRAMIDS TO CONFORM TO RECOMMENDATIONS IN AAMA 1601-76 AND AAMA 1603-93.				
SAFETY:	FALL THROUGH AND BREAKAGE - STANDARD DESIGN ACRYLIC OR POLYCARBONATE GLAZING ARE NOT INTENDED TO SUPPORT THE WEIGHT OF A PERSON OR ANY OTHER LOAD IMPOSED UPON THE SKYLIGHT. IF THE PROJECT LOCATION INDICATES THAT THE SKYLIGHTS MAY BE SUBJECTED TO INCIDENTAL OR UNINTENDED LIVE LOADS, OR IF THE PROJECT SKYLIGHT SPECIFICATIONS INDICATE THAT OSHA APPROVED FALL THROUGH PROTECTION ARE TO BE INTEGRAL TO THE SKYLIGHT DESIGN, FOR CERTAIN SIZE SKYLIGHTS EXARC CAN SUPPLY LABORATORY TESTED GLAZING OR PROTECTIVE SCREEN COVERS THAT ARE IN COMPLIANCE WITH OSHA FALL THROUGH PROTECTION REQUIREMENTS. SEE OUR SKYLIGHTS THAT INCLUDE "FTP" IN THE MODEL NUMBER.				
STANDARD SIZES:	UNIT NO.	OUT SIDE CURB DIMENSIONS (RECTANGULAR)	UNIT NO.	OUT SIDE CURB DIMENSIONS (SQUARE)	GLAZING OPTIONS MODEL NUMBERS
NOTE: ANY CUSTOM SIZE IS AVAILABLE UP TO 106" X 106" OUT SIDE CURB DIMENSIONS	2448	23" X 47"	2424	23" X 23"	CMDD DOUBLE DOME
	2472	23" X 71"	2727	26" X 26"	CMDD SINGLE DOME
	2496	23" X 95"	3636	35" X 35"	CMPP DOUBLE PYRAMID
	2752	26" X 51"	4242	41" X 41"	CMSP SINGLE PYRAMID
	3648	35" X 47"	4848	47" X 47"	CMPP PYRAMID/DOME
	3672	35" X 71"	5252	51" X 51"	
	3696	35" X 95"	6060	59" X 59"	
	4872	47" X 71"	7272	71" X 71"	
	4896	47" X 95"	9696	95" X 95"	
	5296	51" X 95"			
ORDERING INFORMATION:	INDICATE THE FOLLOWING: OUTSIDE CURB DIMENSIONS AND CURB FLASHING CLEARANCE REQUIRED OR DIMENSIONS REQUIRED INSIDE MOUNTING FLANGES			GLAZING MATERIAL REQUIRED GLAZING COLOR QUANTITY	



EXARC SKYLIGHTS, INC.

3793-B NORTH PEACHTREE RD.

CHAMBLEE, GA 30341

WEBSITE: www.exarcskylights.com

770-451-4352

800-247-5934

FAX: 770-451-4934

EMAIL: info@exarcskylights.com

PROJECT:

DATE:

CONTRACTOR:

PAGE 1 OF 2



EXARC SKYLIGHTS, INC.

3793-B NORTH PEACHTREE RD.

CHAMBLEE, GA 30341

WEBSITE: www.exarcskylights.com

770-451-4352

800-247-5934

FAX: 770-451-4934

EMAIL: info@exarcskylights.com

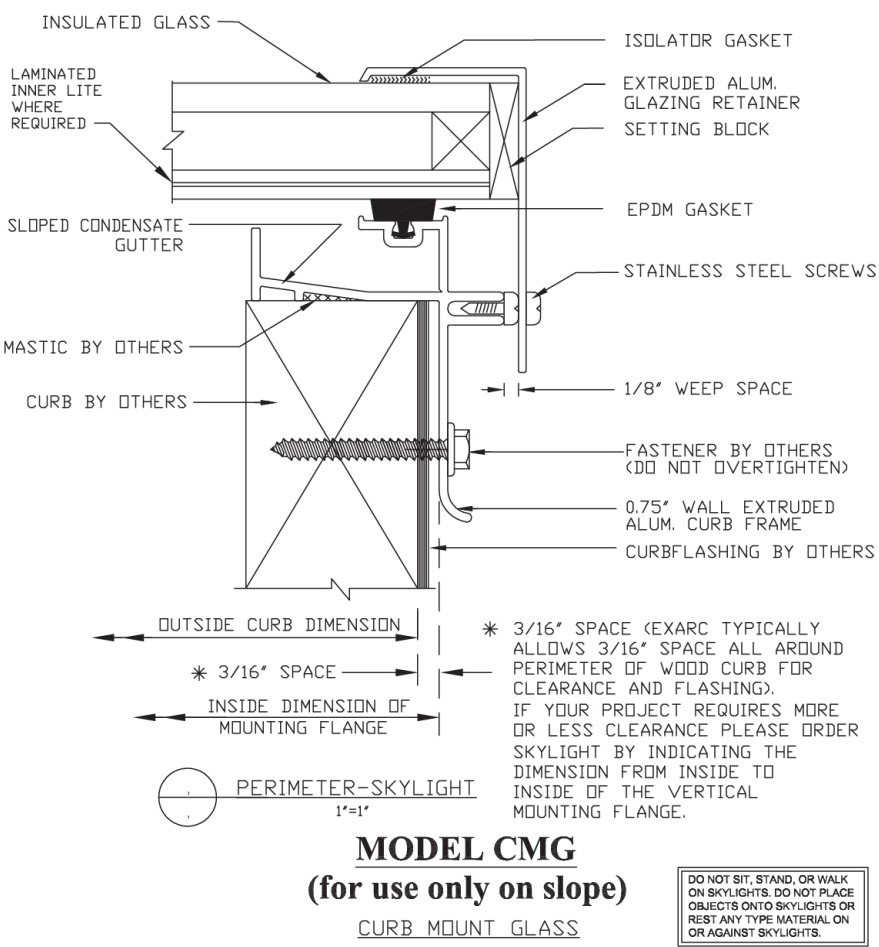
PROJECT:

DATE:

CONTRACTOR:

PAGE 2 OF 2

2. CMG: Curb Mount, Glass



SPECIFICATIONS: MODEL CMG			
MODEL: CMG	EXARC DESIGN, FACTORY ASSEMBLED, ALUMINUM FRAME, CURB MOUNT SKYLIGHT TO MOUNT ONTO ONLY SLOPED FLASHED CURBS BY OTHERS. GLAZING TO BE INSULATED GLASS. ALUMINUM FRAME DESIGN WITH MITERED AND WELDED CORNERS TO HAVE SLOPED CONDENSATE GUTTER WITH PROVISION TO DRAIN ALL MOISTURE TO THE EXTERIOR.		
GLAZING:	TEMPERED OUTER LITE / AIR SPACE / TEMPERED OR LAMINATED INNER LITE ACTUAL GLAZING MAKEUP BASED ON UNIT SIZE AND PROJECT SPECIFICATIONS, COLOR OPTIONS: CLEAR, WHITE TRANSLUCENT, BRONZE, GREY, BLUE OR GREEN TINTED COATING CHOICES: LOW E (SEVERAL PERFORMANCE GRADES), REFLECTIVE COATINGS		
FINISH:	MILL FINISH (STANDARD), BRONZE PAINT (POWDER COAT) OPTIONAL		
ALUMINUM:	EXTRUDED 6063-T5, GLAZING FRAME .075", GLAZING RETAINER .065"		
FASTENERS:	STAINLESS STEEL AT GLAZING CAPS. ALL FASTENERS NATURAL FINISH.		
GASKET:	EXTRUDED EPDM (BLACK)		
SHIPPING:	FACTORY ASSEMBLED UNITS		
INSTALLATION:	BY OTHERS		
DESIGN:	DESIGN LOADS PER LOCAL CODES OR PER PROJECT SPECIFICATIONS		
SAFETY:	FALL THROUGH AND BREAKAGE - INSULATED GLASS IS NOT INTENDED TO SUPPORT THE WEIGHT OF A PERSON OR ANY OTHER LOAD IMPOSED UPON THE SKYLIGHT. IF THE PROJECT LOCATION INDICATES THAT THE SKYLIGHTS MAY BE SUBJECTED TO INCIDENTAL OR UNINTENDED LIVE LOADS, OR IF THE PROJECT SKYLIGHT SPECIFICATIONS INDICATE THAT OSHA APPROVED FALL THROUGH PROTECTION ARE TO BE INTEGRAL TO THE SKYLIGHT DESIGN, EXARC CAN SUPPLY PROTECTIVE SCREEN COVERS THAT ARE IN COMPLIANCE WITH OSHA FALL THROUGH PROTECTION REQUIREMENTS.		
STANDARD SIZES:	UNIT NO.	OUTSIDE CURB DIMENSIONS	NOTE: INSULATED GLASS UNITS MAKE UP FOR SKYLIGHTS WITH OUTSIDE CURB DIMENSIONS UP TO 11.3 SQUARE FEET: 3/4" INSULATED GLASS - 3/16" TEMPERED OUTER LITE / 3/8" AIR SPACE / 3/16" TEMPERED INNER LITE.
NOTE: ANY CUSTOM SIZE SKYLIGHT IS AVAILABLE UP TO 20 SQUARE FEET	2424	23" X 23"	FOR LARGER SKYLIGHTS THE GLAZING THICKNESS WILL INCREASE AND THE INNER LITE WILL BE LAMINATED
	2436	23" X 35"	
	2448	23" X 47"	
	2472	23" X 71"	
	3636	35" X 35"	
	3648	35" X 47"	
ORDERING INFORMATION:	INDICATE THE FOLLOWING: OUTSIDE CURB DIMENSIONS AND CURB FLASHING CLEARANCE REQUIRED OR DIMENSIONS REQUIRED INSIDE MOUNTING FLANGES		GLAZING SPECIFICATION QUANTITY



EXARC SKYLIGHTS, INC.

3793-B NORTH PEACHTREE RD.

CHAMBLEE, GA 30341

WEBSITE: www.exarcskylights.com

770-451-4352

800-247-5934

FAX: 770-451-4934

EMAIL: info@exarcskylights.com

2C



EXARC SKYLIGHTS, INC.

3793-B NORTH PEACHTREE RD.

CHAMBLEE, GA 30341

WEBSITE: www.exarcskylights.com

770-451-4352

800-247-5934

FAX: 770-451-4934

EMAIL: info@exarcskylights.com

2S

PROJECT: _____ DATE: _____

CONTRACTOR: _____

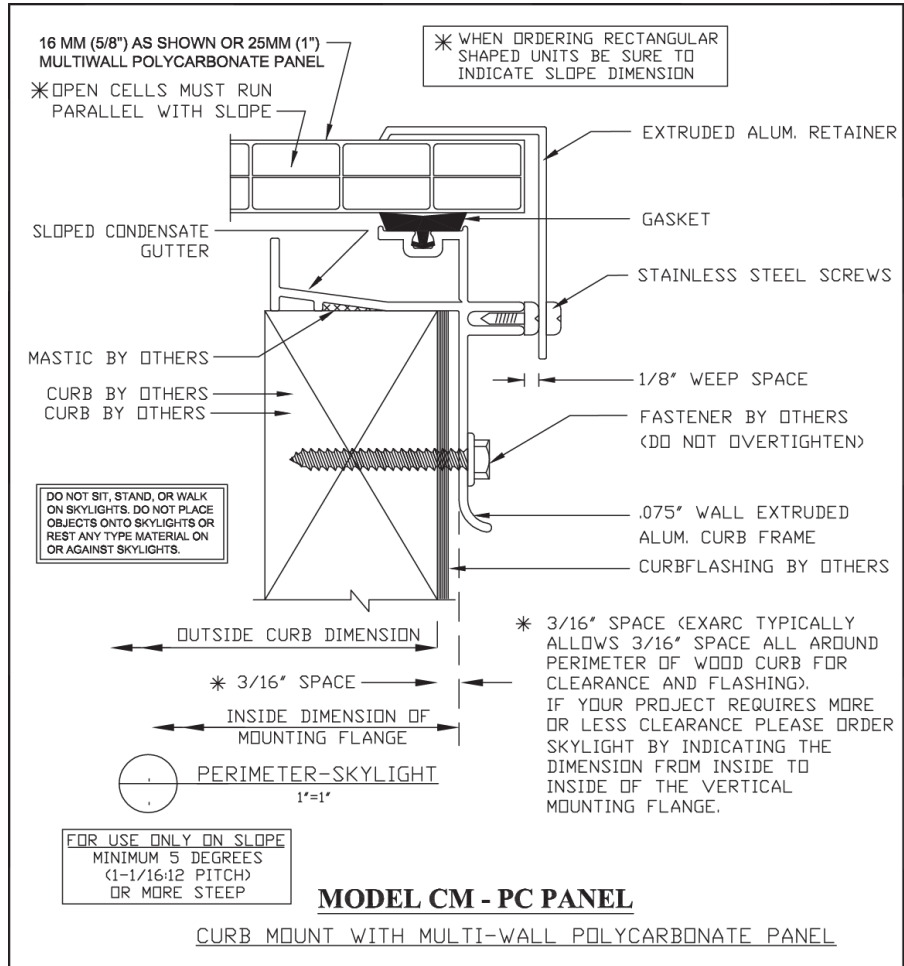
2PAGE 1 OF 2

PROJECT: _____ DATE: _____

CONTRACTOR: _____

2PAGE 2 OF 2

3. **CM-PC PANEL:** Curb Mount with Multi-Wall Polycarbonate Panel



SPECIFICATIONS: MODEL CM-PC PANEL

MODEL: CM-PC PANEL	EXARC DESIGN, FACTORY ASSEMBLED, ALUMINUM FRAME, CURB MOUNT SKYLIGHT TO MOUNT ONTO ONLY SLOPED FLASHED CURBS BY OTHERS. GLAZING TO BE RIBBED MULTIWALL POLYCARBONATE PANELS. ALUMINUM FRAME DESIGN WITH MITERED AND WELDED CORNERS TO HAVE SLOPED CONDENSATE GUTTER WITH PROVISION TO DRAIN ALL MOISTURE TO THE EXTERIOR.		
GLAZING:	16MM (5/8") RIBBED MULTIWALL POLYCARBONATE PANEL OR 25MM (1") RIBBED MULTIWALL POLYCARBONATE PANEL TO BE USED TO SUIT LOADING REQUIREMENTS OR PROJECT SPECIFICATIONS COLOR OPTIONS: CLEAR, WHITE TRANSLUCENT, BRONZE TINTED		
FINISH:	MILL FINISH (STANDARD), BRONZE PAINT (POWDER COAT) OPTIONAL		
ALUMINUM:	EXTRUDED 6063-T5, GLAZING FRAME .075", GLAZING RETAINER .065"		
FASTENERS:	STAINLESS STEEL AT GLAZING CAPS. ALL FASTENERS NATURAL FINISH.		
GASKET:	EXTRUDED EPDM (BLACK)		
SHIPPING:	FACTORY ASSEMBLED UNITS		
INSTALLATION:	BY OTHERS (MOUNTING FASTENERS BY OTHERS)		
DESIGN:	DESIGN LOADS PER LOCAL CODES OR PER PROJECT SPECIFICATIONS		
SAFETY:	FALL THROUGH AND BREAKAGE - STANDARD DESIGN RIBBED MULTIWALL POLYCARBONATE GLAZING IS NOT INTENDED TO SUPPORT THE WEIGHT OF A PERSON OR ANY OTHER LOAD IMPOSED UPON THE SKYLIGHT. IF THE PROJECT LOCATION INDICATES THAT THE SKYLIGHTS MAY BE SUBJECTED TO INCIDENTAL OR UNINTENDED LIVE LOADS, OR IF THE PROJECT SKYLIGHT SPECIFICATIONS INDICATE THAT OSHA APPROVED FALL THROUGH PROTECTION ARE TO BE INTEGRAL TO THE SKYLIGHT DESIGN, EXARC CAN SUPPLY PROTECTIVE SCREEN COVERS THAT ARE IN COMPLIANCE WITH OSHA FALL THROUGH PROTECTION REQUIREMENTS.		
STANDARD SIZES:	UNIT NO.	OUTSIDE CURB DIMENSIONS	CROSS MEMBER SUPPORTS MAY BE REQUIRED ACROSS WIDTH TO MINIMIZE GLAZING DEFLECTION ON LARGER UNITS.
NOTE: ANY CUSTOM SIZE IS AVAILABLE UP TO 47" WIDE X 119"SLOPE OUT SIDE CURB DIMENSIONS	3672	35" WIDTH X 71" SLOPE LENGTH	
	3696	35" WIDTH X 95" SLOPE LENGTH	
	36120	35" WIDTH X 119" SLOPE LENGTH	
	4848	47" WIDTH X 47" SLOPE LENGTH	
	4872	47" WIDTH X 71" SLOPE LENGTH	
	4896	47" WIDTH X 95" SLOPE LENGTH	
	48120	47" WIDTH X 119" SLOPE LENGTH	
ORDERING INFORMATION:	INDICATE THE FOLLOWING: OUTSIDE CURB DIMENSIONS AND CURB FLASHING CLEARANCE REQUIRED OR DIMENSIONS REQUIRED INSIDE MOUNTING FLANGES INDICATE WHICH DIMENSION IS PARALLEL WITH THE SLOPE OF THE ROOF.		GLAZING COLOR- QUANTITY-



EXARC SKYLIGHTS, INC.
3793-B NORTH PEACHTREE RD.
CHAMBLEE, GA 30341
WEBSITE: www.exarcskylights.com

770-451-4352
800-247-5934
FAX: 770-451-4934
EMAIL: info@exarcskylights.com

PROJECT: _____ DATE: _____

CONTRACTOR: _____

3C

PROJECT: _____ DATE: _____

CONTRACTOR: _____

4

PROJECT: _____ DATE: _____

CONTRACTOR: _____

5



EXARC SKYLIGHTS, INC.
3793-B NORTH PEACHTREE RD.
CHAMBLEE, GA 30341
WEBSITE: www.exarcskylights.com

770-451-4352
800-247-5934
FAX: 770-451-4934
EMAIL: info@exarcskylights.com

PROJECT: _____ DATE: _____

CONTRACTOR: _____

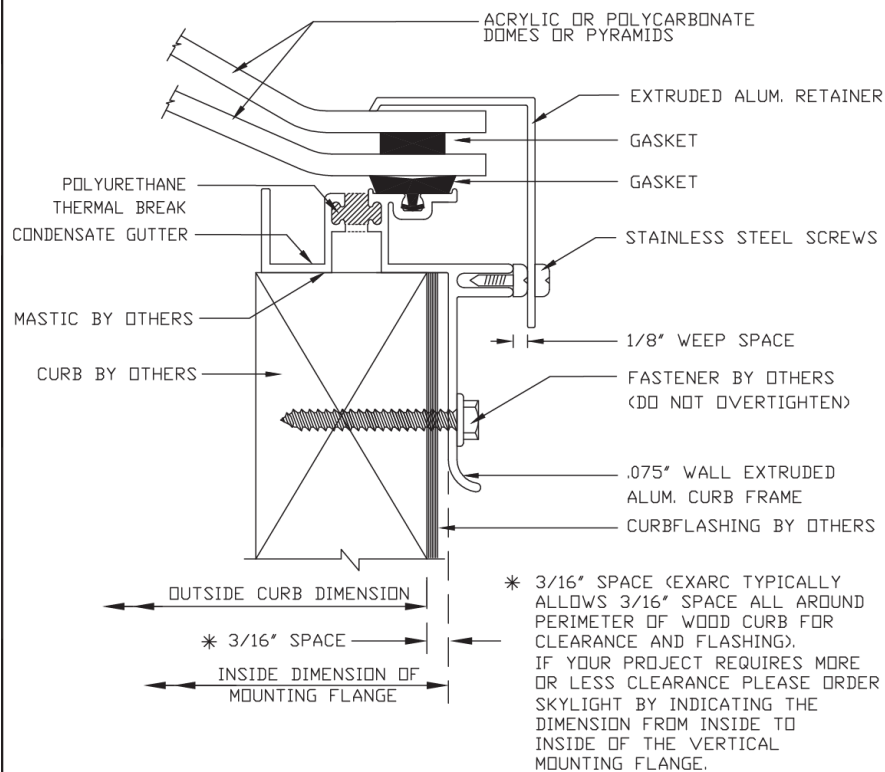
3S

PROJECT: _____ DATE: _____

CONTRACTOR: _____

6

4. **CMDD-TB:** Curb Mount, Double Dome, Thermal Break Frame



DO NOT SIT, STAND, OR WALK
ON SKYLIGHTS. DO NOT PLACE
OBJECTS ONTO SKYLIGHTS OR
REST ANY TYPE MATERIAL ON
OR AGAINST SKYLIGHTS.

PERIMETER-SKYLIGHT
1'=1'

MODEL CMDD-TB

CURB MOUNT DOUBLE DOME WITH THERMAL BREAK FRAME



EXARC SKYLIGHTS, INC.
3793-B NORTH PEACHTREE RD.
CHAMBLEE, GA 30341

WEBSITE: www.exarcskylights.com

770-451-4352
800-247-5934
FAX: 770-451-4934

EMAIL:info@exarcskylights.com

PROJECT:
CONTRACTOR:

DATE: _____

PAGE 1 OF 2

SPECIFICATIONS: MODEL CMDD-TB

MODEL: CMDD-TB	EXARC DESIGN, FACTORY ASSEMBLED, THERMAL BREAK ALUMINUM FRAME, CURB MOUNT SKYLIGHT TO MOUNT ONTO SLOPED OR LEVEL FLASHED CURBS BY OTHERS. GLAZING TO BE THERMOFORMED, ACRYLIC OR POLYCARBONATE DOMES OR PYRAMIDS. ALUMINUM FRAME DESIGN WITH MITERED AND WELDED CORNERS TO HAVE SLOPED CONDENSATE GUTTER WITH PROVISION TO DRAIN ALL MOISTURE TO THE EXTERIOR.
GLAZING:	THERMOFORMED ACRYLIC OR POLYCARBONATE DOME OR PYRAMID (OUTER LITE) THERMOFORMED ACRYLIC OR POLYCARBONATE DOME OR PYRAMID (INNER LITE) COLOR OPTIONS: CLEAR/CLEAR, CLEAR/WHITE, BRONZE/CLEAR
FINISH:	MILL FINISH (STANDARD), BRONZE PAINT (POWDER COAT) OPTIONAL
ALUMINUM:	EXTRUDED 6063-T5, GLAZING FRAME .075", GLAZING RETAINER .065"
FASTENERS:	STAINLESS STEEL AT GLAZING CAPS. ALL FASTENERS NATURAL FINISH.
GASKET:	EXTRUDED EPDM (BLACK)
SHIPPING:	FACTORY ASSEMBLED UNITS
INSTALLATION:	BY OTHERS

DESIGN:	DESIGN LOADS PER LOCAL CODES OR PER PROJECT SPECIFICATIONS - GLAZING THICKNESS AND THERMOFORMED HEIGHT OF DOMES OR PYRAMIDS TO CONFORM TO RECOMMENDATIONS IN AAMA 1601-76 AND AAMA 1603-93.
---------	---

SAFETY:	FALL THROUGH AND BREAKAGE - STANDARD DESIGN ACRYLIC OR POLYCARBONATE GLAZING ARE NOT INTENDED TO SUPPORT THE WEIGHT OF A PERSON OR ANY OTHER LOAD IMPOSED UPON THE SKYLIGHT. IF THE PROJECT LOCATION INDICATES THAT THE SKYLIGHTS MAY BE SUBJECTED TO INCIDENTAL OR UNINTENDED LIVE LOADS, OR IF THE PROJECT SKYLIGHT SPECIFICATIONS INDICATE THAT OSHA APPROVED FALL THROUGH PROTECTION ARE TO BE INTEGRAL TO THE SKYLIGHT DESIGN, FOR CERTAIN SIZE SKYLIGHTS EXARC CAN SUPPLY LABORATORY TESTED GLAZING OR PROTECTIVE SCREEN COVERS THAT ARE IN COMPLIANCE WITH OSHA FALL THROUGH PROTECTION REQUIREMENTS. SEE OUR SKYLIGHTS THAT INCLUDE "FTT" IN THE MODEL NUMBER.
---------	--

STANDARD SIZES:	UNIT NO.	OUT SIDE CURB DIMENSIONS (RECTANGULAR)	UNIT NO.	OUT SIDE CURB DIMENSIONS (SQUARE)	GLAZING OPTIONS MODEL NUMBERS
NOTE: ANY CUSTOM SIZE IS AVAILABLE UP TO 106" X 106" OUT SIDE CURB DIMENSIONS	2448	23" X 47"	2424	23" X 23"	CMDD-TB DOUBLE DOME
	2472	23" X 71"	2727	26" X 26"	CMSD-TB SINGLE DOME
	2496	23" X 95"	3636	35" X 35"	CMPP-TB DOUBLE PYRAMID
	2752	26" X 51"	4242	41" X 41"	CMSP-TB SINGLE PYRAMID
	3648	35" X 47"	4848	47" X 47"	CMPD-TB PYRAMID/DOME
	3672	35" X 71"	5252	51" X 51"	
	3696	35" X 95"	6060	59" X 59"	
	4872	47" X 71"	7272	71" X 71"	
	4896	47" X 95"	9696	95" X 95"	
	5296	51" X 95"			

ORDERING INFORMATION:	INDICATE THE FOLLOWING:	GLAZING MATERIAL REQUIRED
	OUTSIDE CURB DIMENSIONS AND CURB FLASHING CLEARANCE REQUIRED OR DIMENSIONS REQUIRED INSIDE MOUNTING FLANGES	GLAZING COLOR- QUANTITY



EXARC SKYLIGHTS, INC.
3793-B NORTH PEACHTREE RD.
CHAMBLEE, GA 30341

WEBSITE: www.exarcskylights.com

770-451-4352
800-247-5934
FAX: 770-451-4934

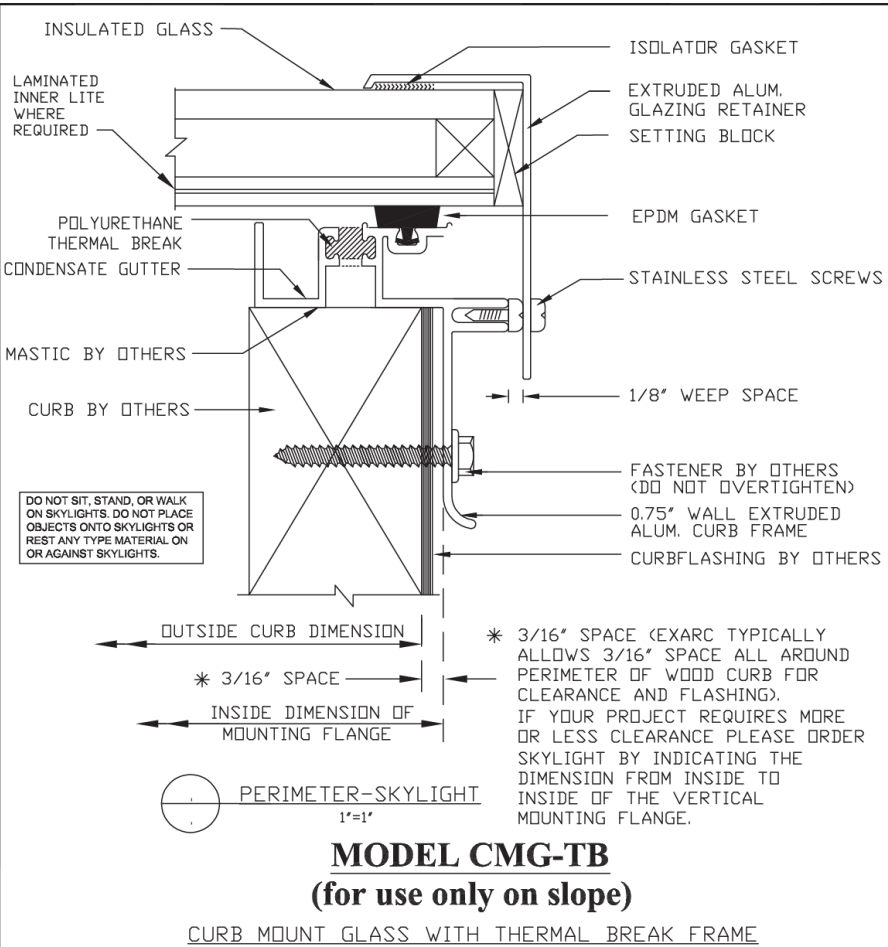
EMAIL: info@exarcskylights.com

PROJECT:
CONTRACTOR:

DATE: _____

PAGE 2 OF 2

5. **CMG-TB:** Curb Mount, Glass, Thermal Break Frame



SPECIFICATIONS: MODEL CMG-TB

MODEL: CMG-TB	EXARC DESIGN, FACTORY ASSEMBLED, THERMAL BREAK ALUMINUM FRAME, CURB MOUNT SKYLIGHT TO MOUNT ONTO ONLY SLOPED FLASHED CURBS BY OTHERS. GLAZING TO BE INSULATED GLASS. ALUMINUM FRAME DESIGN TO HAVE MITERED AND WELDED CORNERS.
GLAZING:	TEMPERED OUTER LITE / AIR SPACE / TEMPERED OR LAMINATED INNER LITE ACTUAL GLAZING MAKEUP BASED ON UNIT SIZE AND PROJECT SPECIFICATIONS, COLOR OPTIONS: CLEAR, WHITE TRANSLUCENT, BRONZE, GREY, BLUE OR GREEN TINTED COATING CHOICES: LOW E (SEVERAL PERFORMANCE GRADES), REFLECTIVE COATINGS
FINISH:	MILL FINISH (STANDARD), BRONZE PAINT (POWDER COAT) OPTIONAL
ALUMINUM:	EXTRUDED 6063-T5, GLAZING FRAME .075", GLAZING RETAINER .065"
FASTENERS:	STAINLESS STEEL AT GLAZING CAPS. ALL FASTENERS NATURAL FINISH.
GASKET:	EXTRUDED EPDM (BLACK)
SHIPPING:	FACTORY ASSEMBLED UNITS
INSTALLATION:	BY OTHERS

DESIGN:	DESIGN LOADS PER LOCAL CODES OR PER PROJECT SPECIFICATIONS
SAFETY:	FALL THROUGH AND BREAKAGE. - INSULATED GLASS IS NOT INTENDED TO SUPPORT THE WEIGHT OF A PERSON OR ANY OTHER LOAD IMPOSED UPON THE SKYLIGHT. IF THE PROJECT LOCATION INDICATES THAT THE SKYLIGHTS MAY BE SUBJECTED TO INCIDENTAL OR UNINTENDED LIVE LOADS, OR IF THE PROJECT SKYLIGHT SPECIFICATIONS INDICATE THAT OSHA APPROVED FALL THROUGH PROTECTION ARE TO BE INTEGRAL TO THE SKYLIGHT DESIGN, EXARC CAN SUPPLY PROTECTIVE SCREEN COVERS THAT ARE IN COMPLIANCE WITH OSHA FALL THROUGH PROTECTION REQUIREMENTS.

STANDARD SIZES:	UNIT NO.	OUTSIDE CURB DIMENSIONS	NOTE:
NOTE: ANY CUSTOM SIZE SKYLIGHT IS AVAILABLE UP TO 20 SQUARE FEET	2424	23" X 23"	INSULATED GLASS UNITS MAKE UP FOR SKYLIGHTS WITH OUTSIDE CURB DIMENSIONS UP TO 11.3 SQUARE FEET: 3/4" INSULATED GLASS - 3/16" TEMPERED OUTER LITE / 3/8" AIR SPACE / 3/16" TEMPERED INNER LITE. FOR LARGER SKYLIGHTS THE GLAZING THICKNESS WILL INCREASE AND THE INNER LITE WILL BE LAMINATED
	2436	23" X 35"	
	2448	23" X 47"	
	2472	23" X 71"	
	3636	35" X 35"	
	3648	35" X 47"	

ORDERING INFORMATION:	INDICATE THE FOLLOWING: OUTSIDE CURB DIMENSIONS AND CURB FLASHING CLEARANCE REQUIRED OR DIMENSIONS REQUIRED INSIDE MOUNTING FLANGES	GLAZING SPECIFICATION QUANTITY
------------------------------	--	---------------------------------------

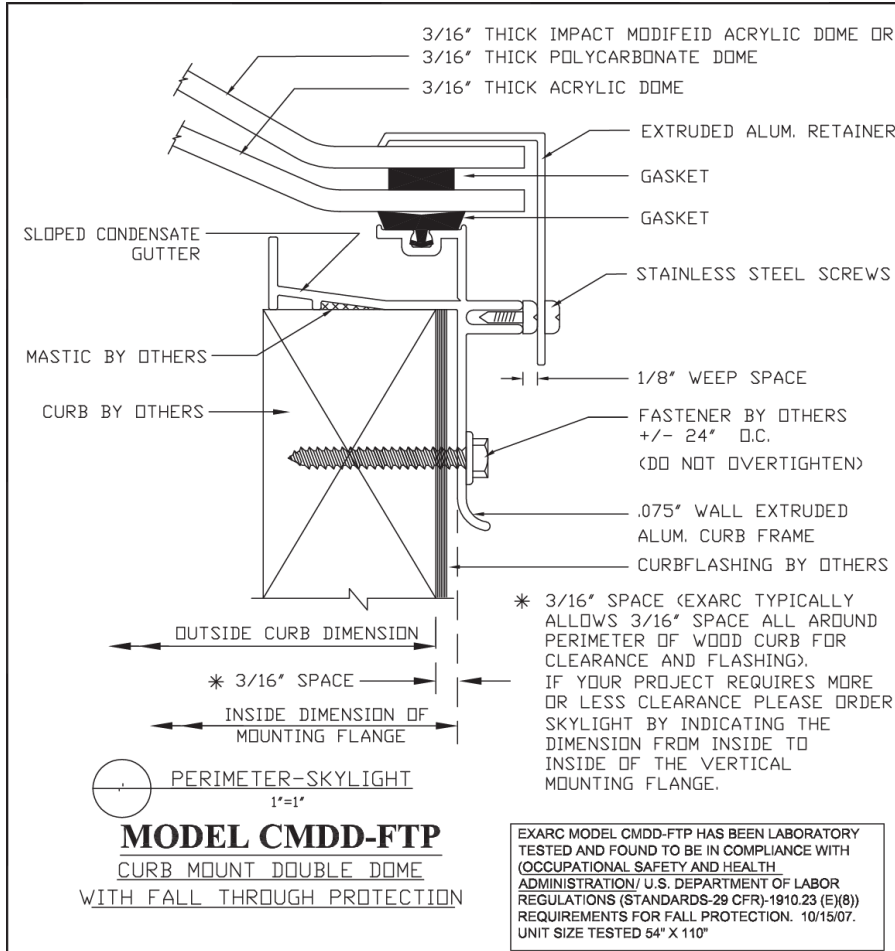
EXARC® EXARC SKYLIGHTS, INC. 770-451-4352 5C
3793-B NORTH PEACHTREE RD. 800-247-5934
CHAMBLEE, GA 30341 FAX: 770-451-4934
WEBSITE: www.exarcskylights.com EMAIL: info@exarcskylights.com

EXARC® EXARC SKYLIGHTS, INC. 770-451-4352 5S
3793-B NORTH PEACHTREE RD. 800-247-5934
CHAMBLEE, GA 30341 FAX: 770-451-4934
WEBSITE: www.exarcskylights.com EMAIL: info@exarcskylights.com

PROJECT: DATE:
CONTRACTOR: PAGE 1 OF 2

PROJECT: DATE:
CONTRACTOR: PAGE 2 OF 2

6. **CMDD-FTP: Curb Mount, Double Dome, OSHA Compliant Fall Through Protection**



SPECIFICATIONS: MODEL CMDD-FTP

MODEL: CMDD	EXARC DESIGN, FACTORY ASSEMBLED, ALUMINUM FRAME, CURB MOUNT SKYLIGHT WITH FALL THROUGH PROTECTION TO MOUNT ONTO SLOPED OR LEVEL FLASHED CURBS BY OTHERS. GLAZING TO BE THERMOFORMED, ACRYLIC OR POLYCARBONATE DOMES. ALUMINUM FRAME DESIGN WITH MITERED AND WELDED CORNERS TO HAVE SLOPED CONDENSATE GUTTER WITH PROVISION TO DRAIN ALL MOISTURE TO THE EXTERIOR.
GLAZING:	THERMOFORMED MODIFIED ACRYLIC OR POLYCARBONATE DOME (OUTER LITE) THERMOFORMED ACRYLIC OR POLYCARBONATE DOME (INNER LITE) COLOR OPTIONS: CLEAR/ CLEAR, CLEAR/ WHITE, BRONZE/ CLEAR
FINISH:	MILL FINISH (STANDARD), BRONZE PAINT (POWDER COAT) OPTIONAL
ALUMINUM:	EXTRUDED 6063-T5, GLAZING FRAME .075", GLAZING RETAINER .065"
FASTENERS:	STAINLESS STEEL AT GLAZING CAPS. ALL FASTENERS NATURAL FINISH.
GASKET:	EXTRUDED EPDM (BLACK)
SHIPPING:	FACTORY ASSEMBLED UNITS
INSTALLATION:	BY OTHERS

DESIGN:	DESIGN LOADS PER LOCAL CODES OR PER PROJECT SPECIFICATIONS - GLAZING THICKNESS AND THERMOFORMED HEIGHT OF DOMES OR PYRAMIDS TO CONFORM TO RECOMMENDATIONS IN AAMA 1601-76 AND AAMA 1603-93.
---------	---

SAFETY: FTP-FALL THROUGH PROTECTION	OSHA COMPLIANT FALL THROUGH PROTECTION AND BREAKAGE - EXARC MODEL CMDD-FTP HAS BEEN LABORATORY TESTED AND FOUND TO BE IN COMPLIANCE WITH (OCCUPATIONAL SAFETY AND HEALTH ADMINISTRATION / U.S. DEPARTMENT OF LABOR REGULATIONS (STANDARDS-29 CFR)-1910.23 (E)(8)) REQUIREMENTS FOR FALL PROTECTION. UNIT SIZE TESTED 54" X 110"
--	---

STANDARD SIZES:	UNIT NO.	OUT SIDE CURB DIMENSIONS (RECTANGULAR)	UNIT NO.	OUT SIDE CURB DIMENSIONS (SQUARE)
NOTE: ANY CUSTOM SIZE IS AVAILABLE UP TO 53" X 109" OUT SIDE CURB DIMENSIONS	2448	23" X 47"	2424	23" X 23"
	2472	23" X 71"	2727	26" X 26"
	2496	23" X 95"	3636	35" X 35"
	2752	26" X 51"	4242	41" X 41"
	3648	35" X 47"	4848	47" X 47"
	3672	35" X 71"	5252	51" X 51"
	3696	35" X 95"		
	4872	47" X 71"		
	4896	47" X 95"		
	5296	51" X 95"		

ORDERING INFORMATION:	INDICATE THE FOLLOWING: OUTSIDE CURB DIMENSIONS AND CURB FLASHING CLEARANCE REQUIRED OR DIMENSIONS REQUIRED INSIDE MOUNTING FLANGES	GLAZING MATERIAL REQUIRED GLAZING COLOR- QUANTITY
-----------------------	--	--



EXARC SKYLIGHTS, INC.
3793-B NORTH PEACHTREE RD.
CHAMBLEE, GA 30341

770-451-4352
800-247-5934
FAX: 770-451-4934

WEBSITE: www.exarcskylights.com
EMAIL: info@exarcskylights.com

6C



EXARC SKYLIGHTS, INC.
3793-B NORTH PEACHTREE RD.
CHAMBLEE, GA 30341

770-451-4352
800-247-5934
FAX: 770-451-4934

WEBSITE: www.exarcskylights.com
EMAIL: info@exarcskylights.com

6S

PROJECT: _____ DATE: _____

CONTRACTOR: _____

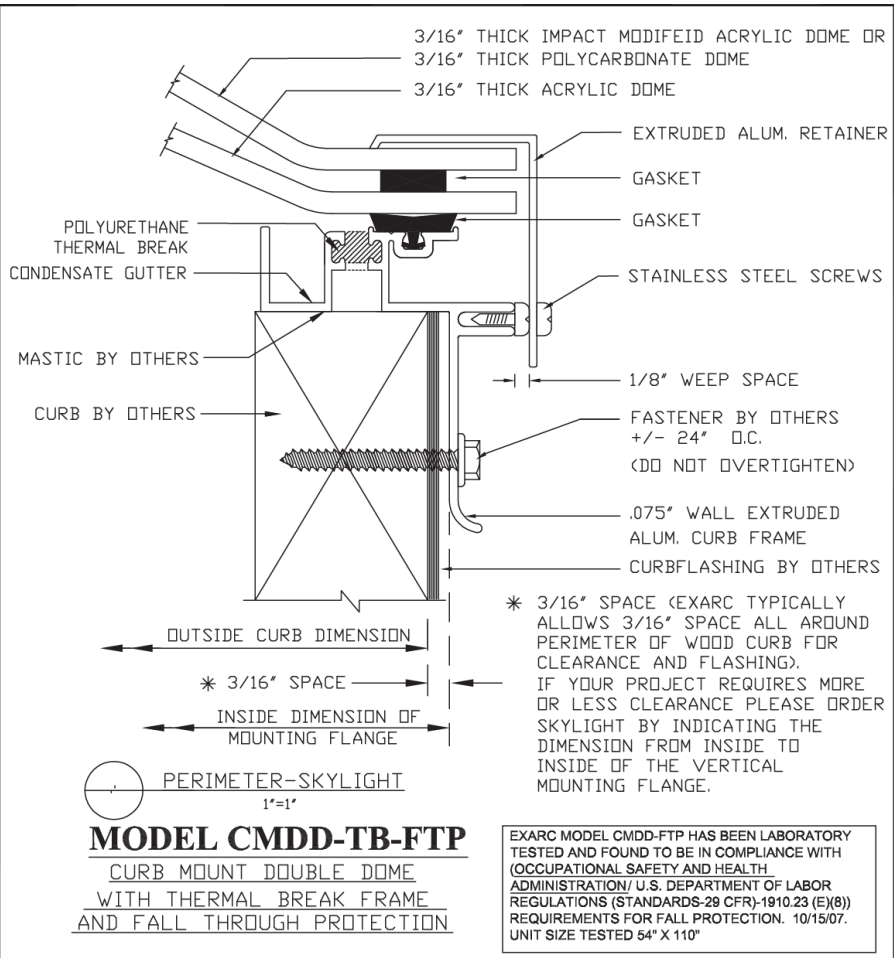
PAGE 1 OF 2

PROJECT: _____ DATE: _____

CONTRACTOR: _____

PAGE 2 OF 2

7. CMDD-TB-FTP: Curb Mount, Double Dome, Thermal Break OSHA Compliant Fall Through Protection



SPECIFICATIONS: MODEL CMDD-TB-FTP

MODEL: CMDD	EXARC DESIGN, FACTORY ASSEMBLED, THERMAL BREAK ALUMINUM FRAME, CURB MOUNT SKYLIGHT WITH FALL THROUGH PROTECTION TO MOUNT ONTO SLOPED OR LEVEL FLASHED CURBS BY OTHERS. GLAZING TO BE THERMOFORMED, ACRYLIC OR POLYCARBONATE DOMES. ALUMINUM FRAME DESIGN WITH MITERED AND WELDED CORNERS WITH PROVISION TO DRAIN ALL MOISTURE TO THE EXTERIOR.
GLAZING:	THERMOFORMED MODIFIED ACRYLIC OR POLYCARBONATE DOME (OUTER LITE) THERMOFORMED ACRYLIC OR POLYCARBONATE DOME (INNER LITE) COLOR OPTIONS: CLEAR/ CLEAR, CLEAR/ WHITE, BRONZE/ CLEAR
FINISH:	MILL FINISH (STANDARD)
ALUMINUM:	EXTRUDED 6063-T5, GLAZING FRAME .075", GLAZING RETAINER .065"
FASTENERS:	STAINLESS STEEL AT GLAZING CAPS. ALL FASTENERS NATURAL FINISH.
GASKET:	EXTRUDED EPDM (BLACK)
SHIPPING:	FACTORY ASSEMBLED UNITS
INSTALLATION:	BY OTHERS
DESIGN:	DESIGN LOADS PER LOCAL CODES OR PER PROJECT SPECIFICATIONS - GLAZING THICKNESS AND THERMOFORMED HEIGHT OF DOMES OR PYRAMIDS TO CONFORM TO RECOMMENDATIONS IN AAMA 1601-76 AND AAMA 1603-93.

SAFETY: FTP-FALL THROUGH PROTECTION	OSHA COMPLIANT FALL THROUGH PROTECTION AND BREAKAGE - EXARC MODEL CMDD-FTP HAS BEEN LABORATORY TESTED AND FOUND TO BE IN COMPLIANCE WITH (OCCUPATIONAL SAFETY AND HEALTH ADMINISTRATION / U.S. DEPARTMENT OF LABOR REGULATIONS (STANDARDS-29 CFR)-1910.23 (E)(8) REQUIREMENTS FOR FALL PROTECTION. UNIT SIZE TESTED 54" X 110"
--	--

STANDARD SIZES:	UNIT NO.	OUT SIDE CURB DIMENSIONS (RECTANGULAR)	UNIT NO.	OUT SIDE CURB DIMENSIONS (SQUARE)
NOTE: ANY CUSTOM SIZE IS AVAILABLE UP TO 53" X 109" OUT SIDE CURB DIMENSIONS	2448	23" X 47"	2424	23" X 23"
	2472	23" X 71"	2727	26" X 26"
	2496	23" X 95"	3636	35" X 35"
	2752	26" X 51"	4242	41" X 41"
	3648	35" X 47"	4848	47" X 47"
	3672	35" X 71"	5252	51" X 51"
	3696	35" X 95"		
	4872	47" X 71"		
	4896	47" X 95"		
	5296	51" X 95"		

ORDERING INFORMATION:	INDICATE THE FOLLOWING: OUTSIDE CURB DIMENSIONS AND CURB FLASHING CLEARANCE REQUIRED OR DIMENSIONS REQUIRED INSIDE MOUNTING FLANGES	GLAZING MATERIAL REQUIRED GLAZING COLOR- QUANTITY
-----------------------	--	---



EXARC SKYLIGHTS, INC.
3793-B NORTH PEACHTREE RD.
CHAMBLEE, GA 30341
WEBSITE: www.exarcskylights.com

770-451-4352
800-247-5934
FAX: 770-451-4934
EMAIL: info@exarcskylights.com



EXARC SKYLIGHTS, INC.
3793-B NORTH PEACHTREE RD.
CHAMBLEE, GA 30341
WEBSITE: www.exarcskylights.com

770-451-4352
800-247-5934
FAX: 770-451-4934
EMAIL: info@exarcskylights.com

PROJECT: _____

CONTRACTOR: _____

DATE: _____

PAGE 1 OF 2

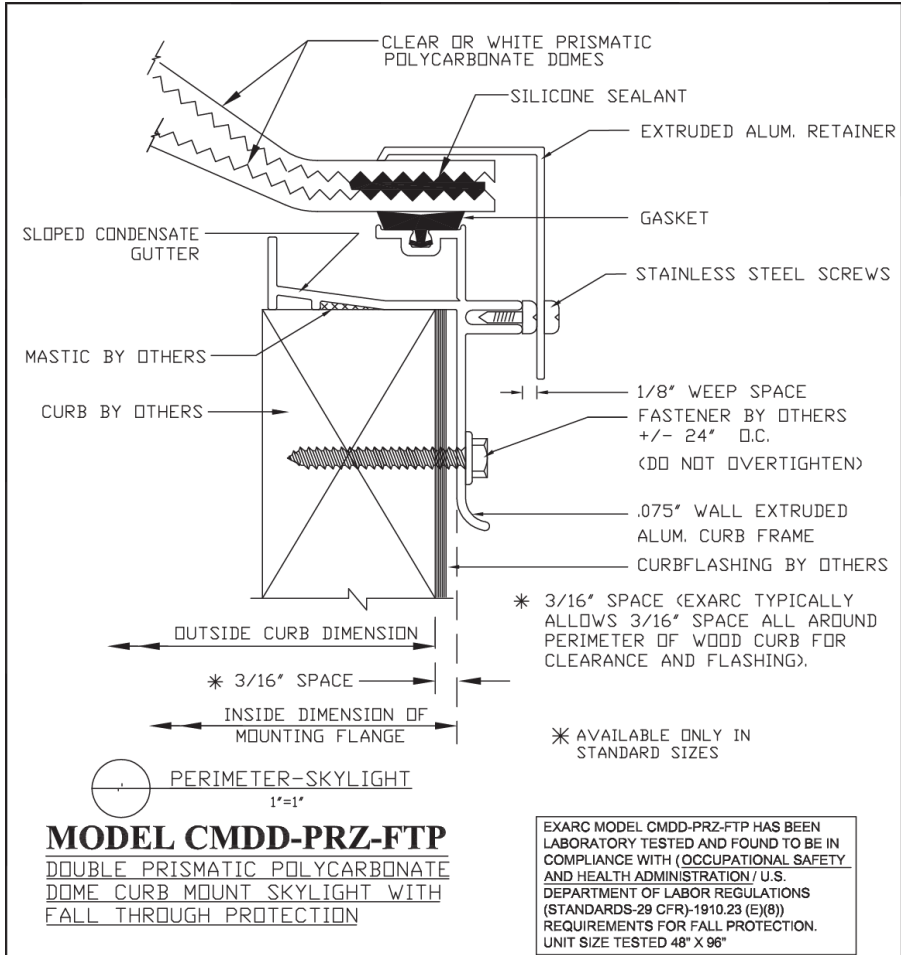
PROJECT: _____

CONTRACTOR: _____

DATE: _____

PAGE 2 OF 2

8. **CMDD-PRZ-FTP: Curb Mount, Double Prismatic Polycarbonate Dome, OSHA Compliant Fall Through Protection**



SPECIFICATIONS: MODEL CMDD-PRZ-FTP

MODEL: CMDD-PRZ-FTP	EXARC DESIGN, FACTORY ASSEMBLED, ALUMINUM FRAME, CURB MOUNT SKYLIGHT WITH FALL THROUGH PROTECTION TO MOUNT ONTO SLOPED OR LEVEL FLASHED CURBS BY OTHERS. GLAZING TO BE THERMOFORMED, PRISMATIC POLYCARBONATE DOMES, ALUMINUM FRAME DESIGN WITH MITERED AND WELDED CORNERS TO HAVE SLOPED CONDENSATE GUTTER WITH PROVISION TO DRAIN ALL MOISTURE TO THE EXTERIOR.
GLAZING:	THERMOFORMED PRISMATIC POLYCARBONATE DOME (OUTER LITE) THERMOFORMED PRISMATIC POLYCARBONATE DOME (INNER LITE) COLOR OPTIONS: CLEAR/ CLEAR, CLEAR/ WHITE
FINISH:	MILL FINISH (STANDARD), BRONZE PAINT (POWDER COAT) OPTIONAL
ALUMINUM:	EXTRUDED 6063-T5, GLAZING FRAME .075", GLAZING RETAINER .065"
FASTENERS:	STAINLESS STEEL AT GLAZING CAPS. ALL FASTENERS NATURAL FINISH.
GASKET:	EXTRUDED EPDM (BLACK)
SHIPPING:	FACTORY ASSEMBLED UNITS
INSTALLATION:	BY OTHERS

DESIGN:	DESIGN LOADS PER LOCAL CODES OR PER PROJECT SPECIFICATIONS
---------	--

SAFETY: FTP-FALL THROUGH PROTECTION	OSHA COMPLIANT FALL THROUGH PROTECTION AND BREAKAGE - EXARC MODEL CMDD-PRZ-FTP HAS BEEN LABORATORY TESTED AND FOUND TO BE IN COMPLIANCE WITH (OCCUPATIONAL SAFETY AND HEALTH ADMINISTRATION / U.S. DEPARTMENT OF LABOR REGULATIONS (STANDARDS-29 CFR)-1910.23 (E)(8) REQUIREMENTS FOR FALL PROTECTION. UNIT SIZE TESTED 48" X 96"
--	--

STANDARD SIZES:	UNIT NO.	OUT SIDE CURB DIMENSIONS
	4848	47" X 47"
	4872	44" X 71"
	4896	47" X 95"

NOTE:
EXARC MODEL CMDD-PRZ-FTP HAS BEEN LABORATORY TESTED AND FOUND TO BE WITHIN THE RECOMMENDED PERFORMANCE VALUES FOR THE FOLLOWING TESTS:
- AIR, WATER AND STRUCTURAL TESTING (AAMA/WDMA/CSA101/LS.2/A440) USING ASTM E 283, ASTM E 330, AND ASTM E 331 TEST METHODS
-ASTM F588 FORCED ENTRY RESISTANCE
-FM 4431 - SIMULATED HAIL IMPACT RESISTANCE TEST USING 2" FREEZER ICE BALLS FIRED AT THE SAMPLE SKYLIGHT

ORDERING INFORMATION:	INDICATE THE FOLLOWING: OUTSIDE CURB DIMENSIONS	GLAZING COLOR- QUANTITY
-----------------------	--	--------------------------------



EXARC SKYLIGHTS, INC.
3793-B NORTH PEACHTREE RD.
CHAMBLEE, GA 30341
WEBSITE: www.exarcskylights.com

770-451-4352
800-247-5934
FAX: 770-451-4934
EMAIL: info@exarcskylights.com

PROJECT: _____

CONTRACTOR: _____

DATE: _____

PAGE 1 OF 2



EXARC SKYLIGHTS, INC.
3793-B NORTH PEACHTREE RD.
CHAMBLEE, GA 30341
WEBSITE: www.exarcskylights.com

770-451-4352
800-247-5934
FAX: 770-451-4934
EMAIL: info@exarcskylights.com

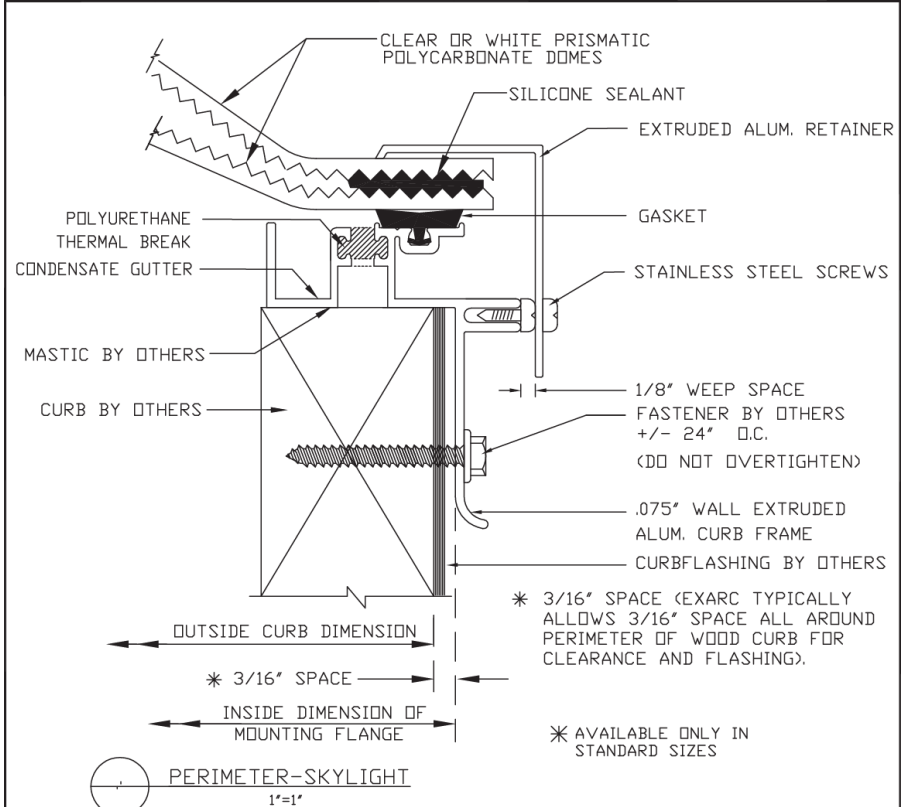
PROJECT: _____

CONTRACTOR: _____

DATE: _____

PAGE 2 OF 2

9. **CMDD-TB-PRZ-FTP: Curb Mount, Thermal Break Frame, Double Prismatic Polycarbonate Dome, OSHA Compliant Fall Through Protection**



MODEL CMDD-TB-PRZ-FTP
DOUBLE PRISMATIC POLYCARBONATE
DOME CURB MOUNT SKYLIGHT WITH
FALL THROUGH PROTECTION

EXARC MODEL CMDD-PRZ-FTP HAS BEEN LABORATORY TESTED AND FOUND TO BE IN COMPLIANCE WITH (OCCUPATIONAL SAFETY AND HEALTH ADMINISTRATION / U.S. DEPARTMENT OF LABOR REGULATIONS (STANDARDS-29 CFR)-1910.23 (E)(8)) REQUIREMENTS FOR FALL PROTECTION. UNIT SIZE TESTED 48" X 96"

SPECIFICATIONS: MODEL CMDD-TB-PRZ-FTP

MODEL: CMDD-PRZ-FTP	EXARC DESIGN, FACTORY ASSEMBLED, THERMAL BREAK ALUMINUM FRAME, CURB MOUNT SKYLIGHT WITH FALL THROUGH PROTECTION TO MOUNT ONTO SLOPED OR LEVEL FLASHED CURBS BY OTHERS. GLAZING TO BE THERMOFORMED, PRISMATIC POLYCARBONATE DOMES. ALUMINUM FRAME DESIGN WITH MITERED AND WELDED CORNERS TO HAVE PROVISION TO DRAIN ALL MOISTURE TO THE EXTERIOR.
GLAZING:	THERMOFORMED PRISMATIC POLYCARBONATE DOME (OUTER LITE) THERMOFORMED PRISMATIC POLYCARBONATE DOME (INNER LITE) COLOR OPTIONS: CLEAR/ CLEAR, CLEAR/ WHITE
FINISH:	MILL FINISH (STANDARD)
ALUMINUM:	EXTRUDED 6063-T5, GLAZING FRAME .075", GLAZING RETAINER .065"
FASTENERS:	STAINLESS STEEL AT GLAZING CAPS. ALL FASTENERS NATURAL FINISH.
GASKET:	EXTRUDED EPDM (BLACK)
SHIPPING:	FACTORY ASSEMBLED UNITS
INSTALLATION:	BY OTHERS

DESIGN:	DESIGN LOADS PER LOCAL CODES OR PER PROJECT SPECIFICATIONS
---------	--

SAFETY: FTP-FALL THROUGH PROTECTION	OSHA COMPLIANT FALL THROUGH PROTECTION AND BREAKAGE - EXARC MODEL CMDD-PRZ-FTP HAS BEEN LABORATORY TESTED AND FOUND TO BE IN COMPLIANCE WITH (OCCUPATIONAL SAFETY AND HEALTH ADMINISTRATION / U.S. DEPARTMENT OF LABOR REGULATIONS (STANDARDS-29 CFR)-1910.23 (E)(8)) REQUIREMENTS FOR FALL PROTECTION. UNIT SIZE TESTED 48" X 96"
--	--

STANDARD SIZES:	UNIT NO.	OUT SIDE CURB DIMENSIONS
	4848	47" X 47"
	4872	44" X 71"
	4896	47" X 95"

NOTE:
EXARC MODEL CMDD-PRZ-FTP HAS BEEN LABORATORY TESTED AND FOUND TO BE WITHIN THE RECOMMENDED PERFORMANCE VALUES FOR THE FOLLOWING TESTS:
- AIR, WATER AND STRUCTURAL TESTING (AAMA/WDMA/CSA101/LS2/A440) USING ASTM E 283, ASTM E 330, AND ASTM E 331 TEST METHODS
-ASTM F588 FORCED ENTRY RESISTANCE
-FM 4431 - SIMULATED HAIL IMPACT RESISTANCE TEST USING 2" FREEZER ICE BALLS FIRED AT THE SAMPLE SKYLIGHT

ORDERING INFORMATION:	INDICATE THE FOLLOWING: OUTSIDE CURB DIMENSIONS	GLAZING COLOR- QUANTITY
-----------------------	--	----------------------------



EXARC SKYLIGHTS, INC.
3793-B NORTH PEACHTREE RD.
CHAMBLEE, GA 30341
WEBSITE: www.exarcskylights.com

770-451-4352
800-247-5934
FAX: 770-451-4934
EMAIL: info@exarcskylights.com

9C



EXARC SKYLIGHTS, INC.
3793-B NORTH PEACHTREE RD.
CHAMBLEE, GA 30341
WEBSITE: www.exarcskylights.com

770-451-4352
800-247-5934
FAX: 770-451-4934
EMAIL: info@exarcskylights.com

9S

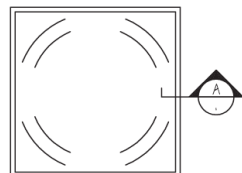
PROJECT: _____ DATE: _____
CONTRACTOR: _____

PAGE 1 OF 2

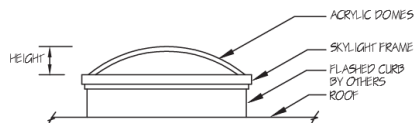
PROJECT: _____ DATE: _____
CONTRACTOR: _____

PAGE 2 OF 2

10. CMDD-CF1: Curb Mount, CF1 Curb Frame, Double Dome

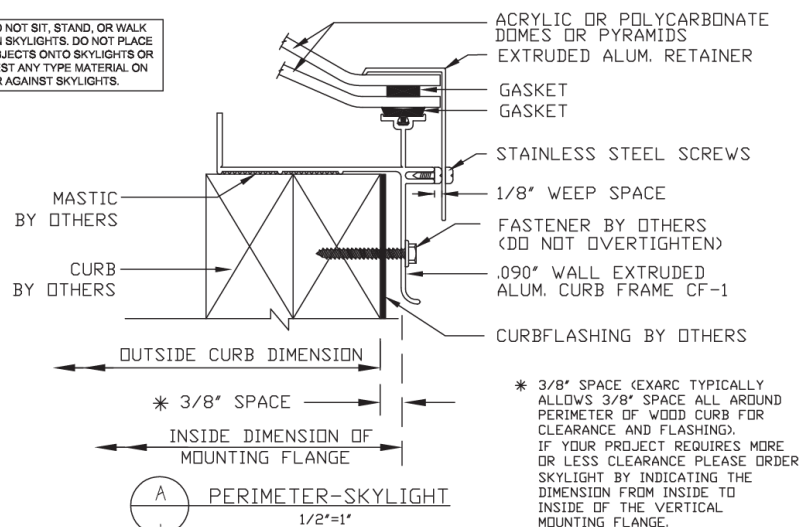


PLAN - SKYLIGHT
N.T.S.



ELEVATION SKYLIGHT
N.T.S.

DO NOT SIT, STAND, OR WALK ON SKYLIGHTS. DO NOT PLACE OBJECTS ON TO SKYLIGHTS OR REST ANY TYPE MATERIAL ON OR AGAINST SKYLIGHTS.



MODEL CMDD-CF1
CURB MOUNT DOUBLE DOME-CF1



EXARC SKYLIGHTS, INC.
3793-B NORTH PEACHTREE RD.
CHAMBLEE, GA 30341

WEBSITE: www.exarcskylights.com

770-451-4352
800-247-5934
FAX: 770-451-4934

EMAIL: info@exarcskylights.com

10C

PROJECT:
CONTRACTOR:

DATE:

PAGE 1 OF 2

SPECIFICATIONS: MODEL CMDD-CF-1

MODEL: CMDD - CF-1	EXARC DESIGN, FACTORY ASSEMBLED, ALUMINUM FRAME, CURB MOUNT SKYLIGHT TO MOUNT ONTO SLOPED OR LEVEL FLASHED CURBS BY OTHERS. GLAZING TO BE THERMOFORMED, ACRYLIC OR POLYCARBONATE DOMES OR PYRAMIDS. ALUMINUM FRAME DESIGN WITH MITERED AND WELDED CORNERS TO HAVE EXTRA WIDE CONDENSATE GUTTER FRAME WITH PROVISION TO DRAIN ALL MOISTURE TO THE EXTERIOR. WIDE FRAME IS USED FOR LARGER SKYLIGHTS WHERE EXTRA STABILITY IS NEEDED OR IT IS NECESSARY FOR THE CURBFRAME TO COVER A WIDE CURB.
GLAZING:	THERMOFORMED MODIFIED ACRYLIC OR POLYCARBONATE DOME (OUTER LITE) THERMOFORMED ACRYLIC OR POLYCARBONATE DOME (INNER LITE) COLOR OPTIONS: CLEAR/ CLEAR, CLEAR/ WHITE, BRONZE/ CLEAR
FINISH:	MILL FINISH (STANDARD), BRONZE PAINT (POWDER COAT) OPTIONAL
ALUMINUM:	EXTRUDED 6063-T5, GLAZING FRAME .075", GLAZING RETAINER .065"
FASTENERS:	STAINLESS STEEL AT GLAZING CAPS. ALL FASTENERS NATURAL FINISH.
GASKET:	EXTRUDED EPDM (BLACK)
SHIPPING:	FACTORY ASSEMBLED UNITS
INSTALLATION:	BY OTHERS

DESIGN:	DESIGN LOADS PER LOCAL CODES OR PER PROJECT SPECIFICATIONS - GLAZING THICKNESS AND THERMOFORMED HEIGHT OF DOMES OR PYRAMIDS TO CONFORM TO RECOMMENDATIONS IN AAMA 1601-76 AND AAMA 1603-93.
----------------	---

SAFETY:	FALL THROUGH AND BREAKAGE - STANDARD DESIGN ACRYLIC OR POLYCARBONATE GLAZING ARE NOT INTENDED TO SUPPORT THE WEIGHT OF A PERSON OR ANY OTHER LOAD IMPOSED UPON THE SKYLIGHT. IF THE PROJECT LOCATION INDICATES THAT THE SKYLIGHTS MAY BE SUBJECTED TO INCIDENTAL OR UNINTENDED LIVE LOADS, OR IF THE PROJECT SKYLIGHT SPECIFICATIONS INDICATE THAT OSHA APPROVED FALL THROUGH PROTECTION ARE TO BE INTEGRAL TO THE SKYLIGHT DESIGN, FOR CERTAIN SIZE SKYLIGHTS EXARC CAN SUPPLY LABORATORY TESTED GLAZING OR PROTECTIVE SCREEN COVERS THAT ARE IN COMPLIANCE WITH OSHA FALL THROUGH PROTECTION REQUIREMENTS. SEE OUR SKYLIGHTS THAT INCLUDE "FTP" IN THE MODEL NUMBER.
----------------	--

STANDARD SIZES:	STANDARD SIZES ARE NOT STOCKED FOR UNITS FRAMED WITH THE CF-1 CURB FRAME. ANY CUSTOM SIZE IS AVAILABLE UP TO 106" X 106"	GLAZING OPTIONS MODEL NUMBERS
------------------------	--	--------------------------------------

CMDD-CF1	DOUBLE DOME
CMDD-CF1	SINGLE DOME
CMPP-CF1	DOUBLE PYRAMID
CMSP-CF1	SINGLE PYRAMID
CMPP-CF1	PYRAMID/DOME

ORDERING INFORMATION:	INDICATE THE FOLLOWING: OUTSIDE CURB DIMENSIONS AND CURB FLASHING CLEARANCE REQUIRED OR DIMENSIONS REQUIRED INSIDE MOUNTING FLANGES	GLAZING MATERIAL REQUIRED GLAZING COLOR- QUANTITY
------------------------------	--	---



EXARC SKYLIGHTS, INC.
3793-B NORTH PEACHTREE RD.
CHAMBLEE, GA 30341

WEBSITE: www.exarcskylights.com

770-451-4352
800-247-5934
FAX: 770-451-4934

EMAIL: info@exarcskylights.com

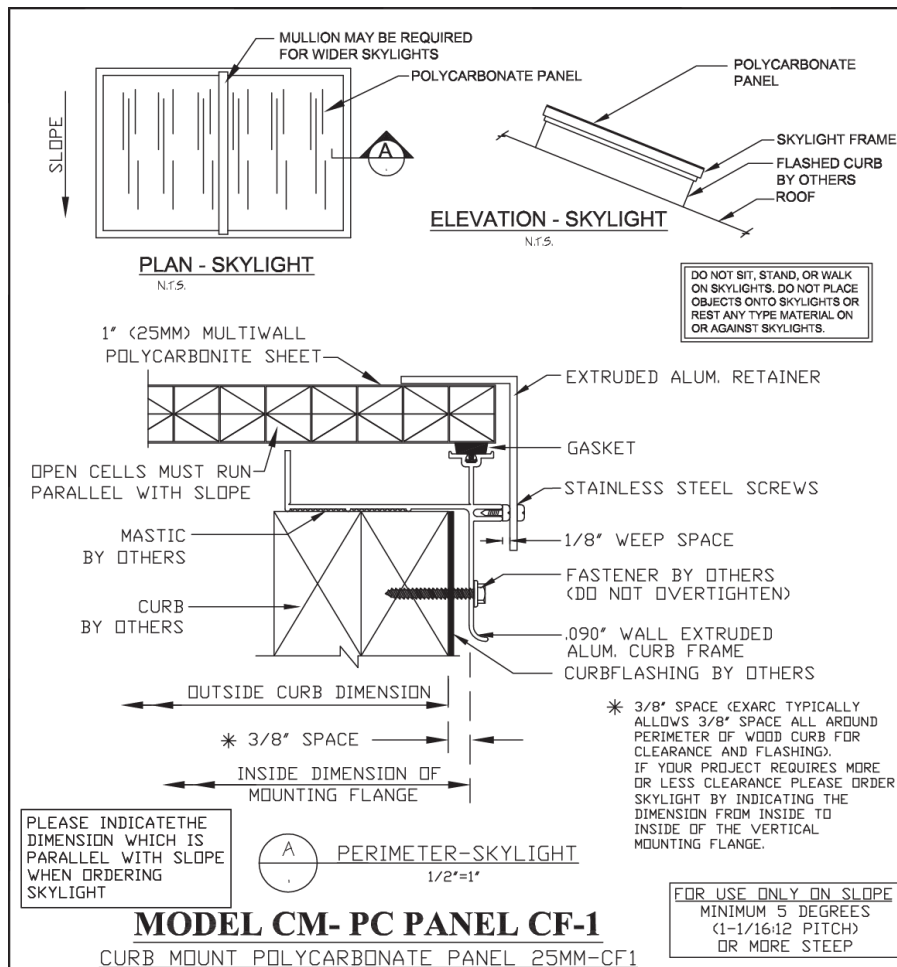
10S

PROJECT:
CONTRACTOR:

DATE:

PAGE 2 OF 2

11. CM-PC PANEL-CF1: Curb Mount, CF1 Curb Frame, Polycarbonate Panel



SPECIFICATIONS: MODEL CM-PC PANEL-CF1

MODEL: CM-PC PANEL-CF1	EXARC DESIGN, FACTORY ASSEMBLED, ALUMINUM FRAME, CURB MOUNT SKYLIGHT TO MOUNT ONTO SLOPED ONLY FLASHED CURBS BY OTHERS. GLAZING TO BE RIBBED MULTI-WALL POLYCARBONATE PANELS. ALUMINUM FRAME DESIGN WITH MITERED AND WELDED CORNERS TO HAVE EXTRA WIDE CONDENSATE GUTTER FRAME WITH PROVISION TO DRAIN ALL MOISTURE TO THE EXTERIOR. WIDE FRAME IS USED FOR LARGER SKYLIGHTS WHERE EXTRA STABILITY IS NEEDED OR IT IS NECESSARY FOR THE CURBFRAME TO COVER A WIDE CURB. ALSO CF-1 EXTRUSION FACILITATES THE USE OF A SLOPED MULLION IF REQUIRED.
GLAZING:	16MM (5/8") RIBBED MULTIWALL POLYCARBONATE PANEL OR 25MM (1") RIBBED MULTIWALL POLYCARBONATE PANEL (PANEL THICKNESS TO SUIT LOADING REQUIREMENTS OR PROJECT SPECIFICATIONS) TINT CHOICES: CLEAR, WHITE TRANSLUCENT, BRONZE TINTED
FINISH:	MILL FINISH (STANDARD), BRONZE PAINT (POWDER COAT) OPTIONAL
ALUMINUM:	EXTRUDED 6063-T5, GLAZING FRAME .075", GLAZING RETAINER .065"
FASTENERS:	STAINLESS STEEL AT GLAZING CAPS. ALL FASTENERS NATURAL FINISH.
GASKET:	EXTRUDED EPDM (BLACK)
SHIPPING:	FACTORY ASSEMBLED UNITS
INSTALLATION:	BY OTHERS

DESIGN:	DESIGN LOADS PER LOCAL CODES OR PER PROJECT SPECIFICATIONS -
---------	--

SAFETY:	FALL THROUGH AND BREAKAGE - STANDARD DESIGN ACRYLIC OR POLYCARBONATE GLAZING ARE NOT INTENDED TO SUPPORT THE WEIGHT OF A PERSON OR ANY OTHER LOAD IMPOSED UPON THE SKYLIGHT. IF THE PROJECT LOCATION INDICATES THAT THE SKYLIGHTS MAY BE SUBJECTED TO INCIDENTAL OR UNINTENDED LIVE LOADS, OR IF THE PROJECT SKYLIGHT SPECIFICATIONS INDICATE THAT OSHA APPROVED FALL THROUGH PROTECTION ARE TO BE INTEGRAL TO THE SKYLIGHT DESIGN, FOR CERTAIN SIZE SKYLIGHTS EXARC CAN SUPPLY LABORATORY TESTED GLAZING OR PROTECTIVE SCREEN COVERS THAT ARE IN COMPLIANCE WITH OSHA FALL THROUGH PROTECTION REQUIREMENTS. SEE OUR SKYLIGHTS THAT INCLUDE "FTP" IN THE MODEL NUMBER.
---------	--

STANDARD SIZES:	STANDARD SIZES ARE NOT STOCKED FOR UNITS FRAMED WITH THE CF-1 CURB FRAME AND PC PANELS.
-----------------	---

CROSS MEMBER SUPPORTS MAY BE REQUIRED ACROSS WIDTH TO MINIMIZE GLAZING DEFLECTION ON LARGER UNITS.

ORDERING INFORMATION:	INDICATE THE FOLLOWING: OUTSIDE CURB DIMENSIONS AND CURB FLASHING CLEARANCE REQUIRED OR DIMENSIONS REQUIRED INSIDE MOUNTING FLANGES	GLAZING MATERIAL REQUIRED GLAZING COLOR- QUANTITY
-----------------------	--	---



EXARC SKYLIGHTS, INC.
3793-B NORTH PEACHTREE RD.
CHAMBLEE, GA 30341

WEBSITE: www.exarcskylights.com

770-451-4352
800-247-5934
FAX: 770-451-4934

EMAIL: info@exarcskylights.com

11C

PROJECT:
CONTRACTOR:

DATE:

PAGE 1 OF 2



EXARC SKYLIGHTS, INC.
3793-B NORTH PEACHTREE RD.
CHAMBLEE, GA 30341

WEBSITE: www.exarcskylights.com

770-451-4352
800-247-5934
FAX: 770-451-4934

EMAIL: info@exarcskylights.com

11S

PROJECT:
CONTRACTOR:

DATE:

PAGE 2 OF 2